

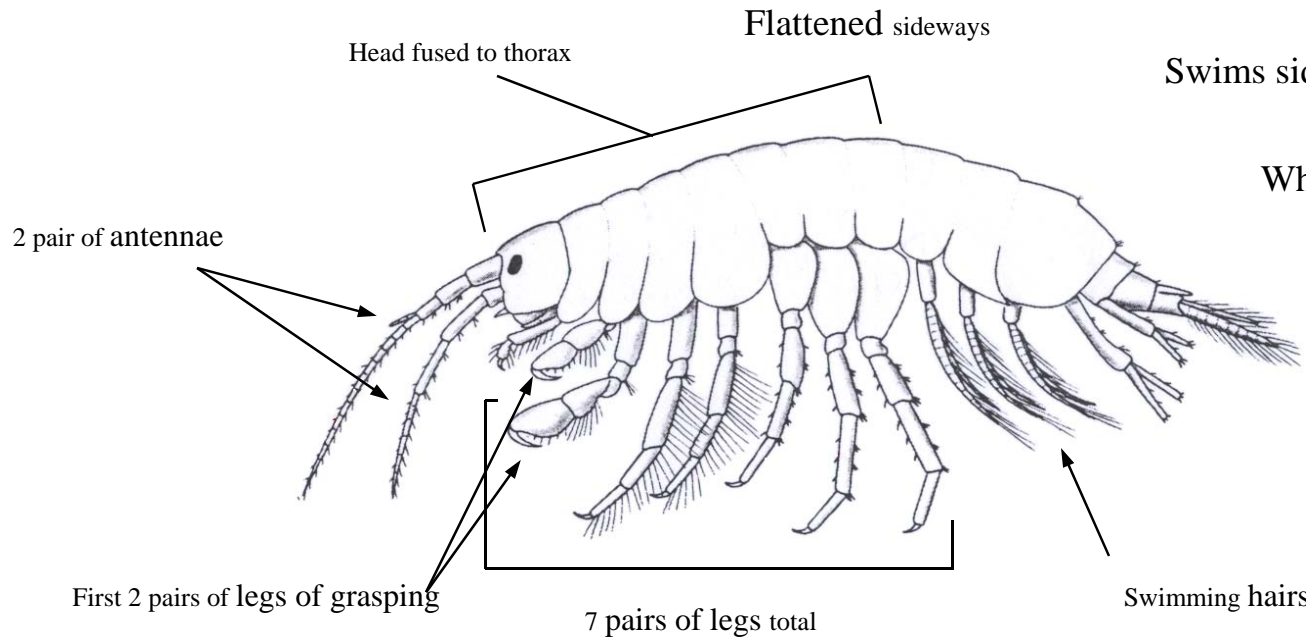
# Scud (Sideswimmer)

Size: 5-20mm

Order: Amphipoda Family: Gammaridae  
Number of species in North America: 150



CREEK CONNECTIONS,  
Allegheny College



Swims sideways and rests in a curved position

White or clear body with many segments

2 scuds often cling together

*Credits: McCafferty, W. Patrick. Aquatic Entomology, 1981.*

## SIMILAR TO: Aquatic Sowbug

- Body flattened side to side (scud) vs. body flattened top to bottom (aquatic sowbug).

**Diet:** Detritus (dead animal and plant pieces or other organic matter). Some may filter feed.

**Food for:** Fish, predaceous water insects.

**Habitat:** Open water and rests on bottom and on debris in shallow water environments.

**Movement:** Swims on side. Also crawls and walks. Often will swim in circles. More active at night.

**Breathing:** Movement of swimming hairs pushes oxygen into the gills under its body.

**Water Quality Indicator:** Group II – Can tolerate some water pollution.

## Life Cycle Corner

Eggs kept with female in portions of a shedded skeleton.

### Incomplete metamorphosis

Eggs hatch in 9 - 30 days revealing miniature adults that stay with female for a few days until she molts releasing the young.

